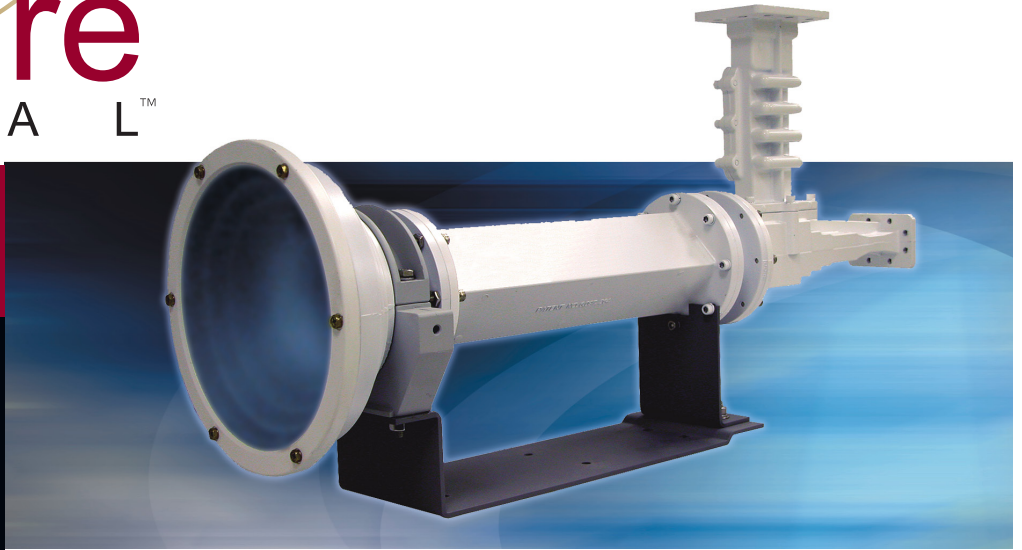


**PRODUCT
SPECIFICATIONS**



C-band Circular-Polarized RxTx

The Skyware Global C-band Circular-Polarized Feed has been specifically designed for our line of offset reflectors. Electrically tested and matched, this die-cast feed assembly provides maximum performance for demanding commercial applications.

- Includes mounting bracket, LNB hardware and gaskets.
- Field replaceable feed horn window.
- All materials comply with EU directive No. 2002/95/EC (RoHS).



SPECIFICATIONS

Model 611608407 L/R and 611618407 L/R

Rx

Operating Frequency	3.625-4.2 GHz
VSWR	1.5:1
Port to Port Isolation	70 dB
Insertion Loss	0.5 dB
Axial Ratio	3.0 dB
Interface	CPR229F

Tx

Operating Frequency	5.850-6.425 GHz
VSWR	1.4:1
Port to Port Isolation	80 dB
Insertion Loss	0.3 dB
Axial Ratio	2.3 dB
Interface	Type N (611608407 L/R) WR137F (611618407 L/R)

(All specifications typical)

